

EaseUS NTFS for Mac User Guide

Table of Content

Welcome.....	- 1 -
Activation.....	- 1 -
Features.....	- 4 -
Tray.....	- 6 -
Feedback and Support.....	- 7 -

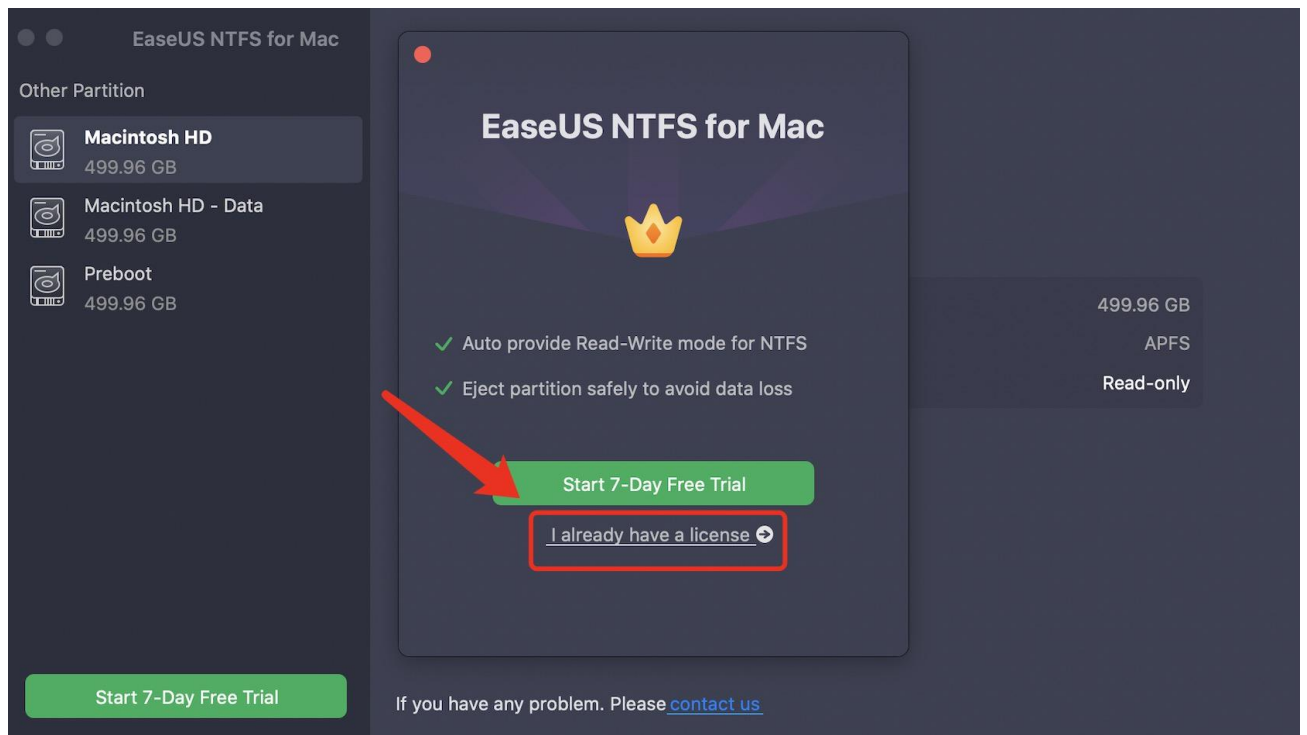
Welcome

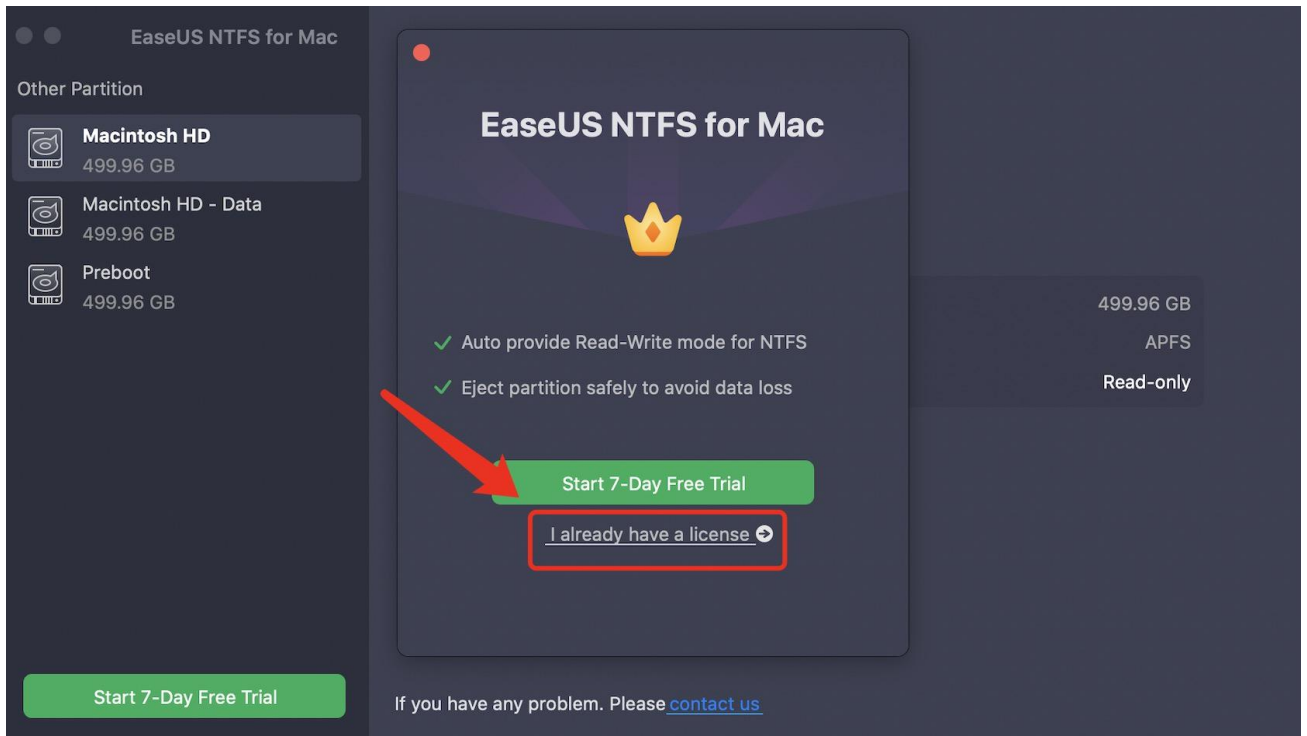
Microsoft NTFS is one of the most commonly used file systems of Windows. However, writing and editing files from a hard drive formatted to NTFS on a Mac computer is still a barrier.

EaseUS NTFS for Mac grants MacOS users access to an NTFS drive. With the support of this tool, MacOS users are able to mount/unmount NTFS drives on a Mac computer, as well as editing the files inside the drive.

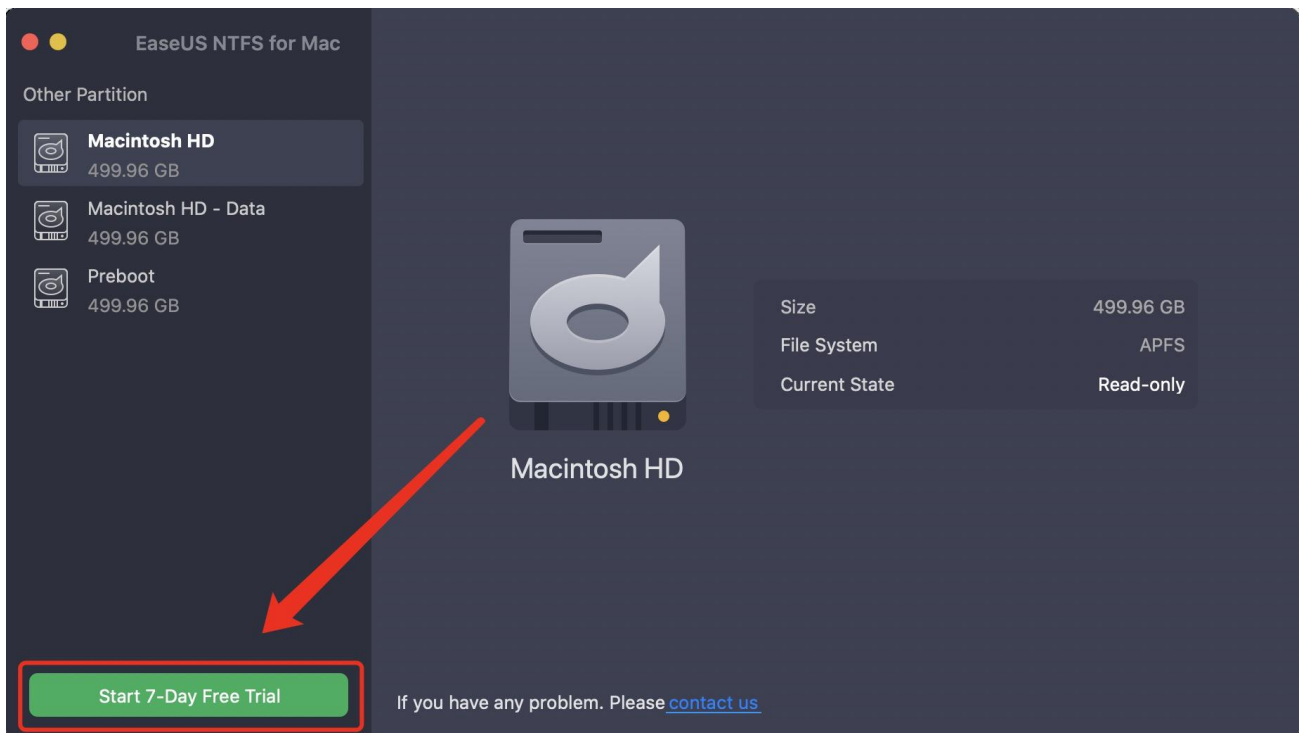
Activation

When first running the Trial version of EaseUS NTFS for Mac, a window pops up advising you to start a 7-day trial period or input a license code to activate the product.





If this prompted window is skipped, you can always retrieve the activation page by clicking the Start 7-Day Free Trial button.



Choose a plan at your needs, or, if you already own a license code for EaseUS NTFS for Mac, click I already have a license, and insert your license code to activate the product.

Free to Try EaseUS NTFS for Mac

- ✓ 7 days free to enjoy all features of EaseUS NTFS for Mac
- ✓ Auto provide Read-Write mode for Ntfs
- ✓ Eject volume/partition safely to avoid data loss

7days Best

\$ 0

then \$14.95/month subscription

Free Trial

Lifetime

\$ 49.95

Technical support

Buy Now

[I already have a license](#)

Free to Try EaseUS NTFS for Mac

- ✓ 7 days free to enjoy all features of EaseUS NTFS for Mac
- ✓ Auto provide Read-Write mode for Ntfs
- ✓ Eject volume/partition safely to avoid data loss

7days Best

\$ 0

then \$14.95/month subscription

Free Trial

Lifetime

\$ 49.95

Technical support

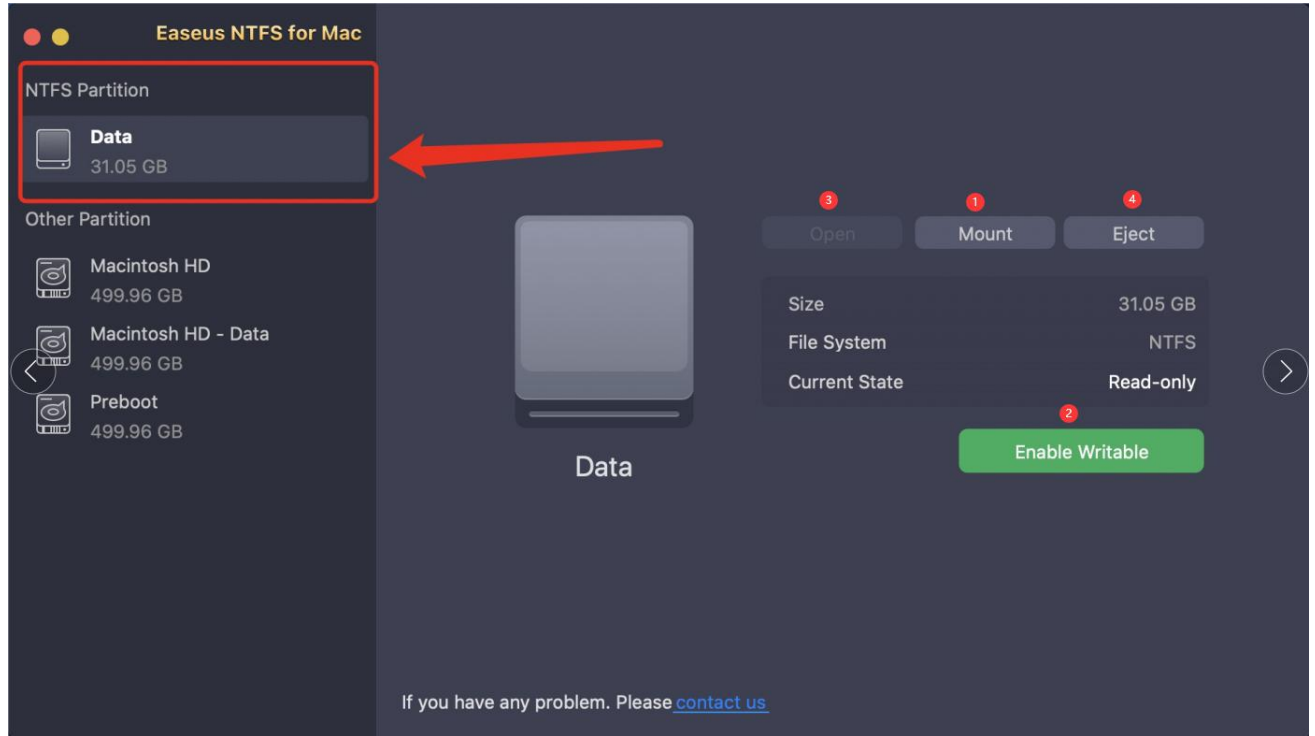
Buy Now

Enter license code here if you already have one.

Activate

Features

When an NTFS drive is connected to your Mac computer, it will be automatically detected by EaseUS NTFS for Mac and will be listed under the NTFS partition section. All the other drives, including your Macintosh HDD, are listed below, in the Other Partition Section.



1. Mount/Unmount

The drive will be automatically mounted once it is connected to the Mac. You can unmount it in the product when needed. The drive cannot open once unmounted.

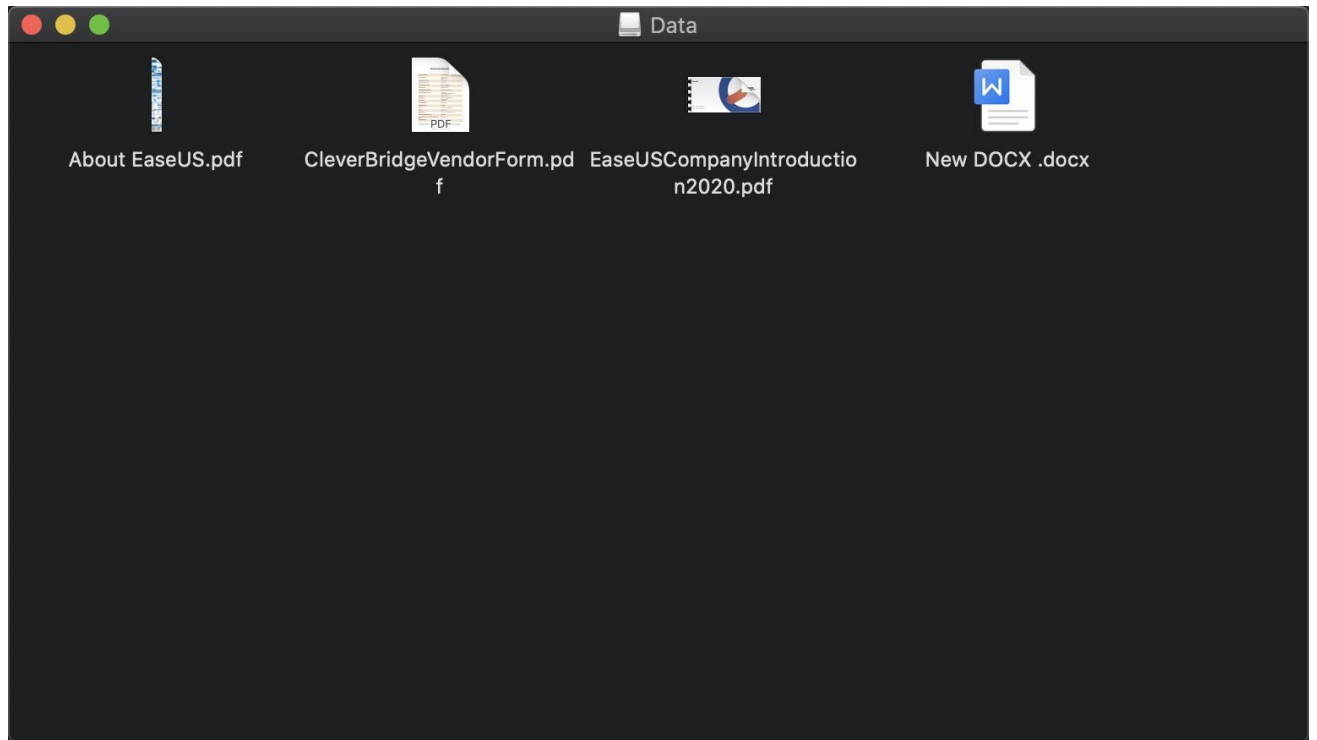
2. Enable Writable/Disable Writable

The files in the NTFS drive will be read-only if the writable feature is disabled. If you need to add, edit or remove files from this NTFS drive, please first click Enable Writable to grant full access to the NTFS file system.

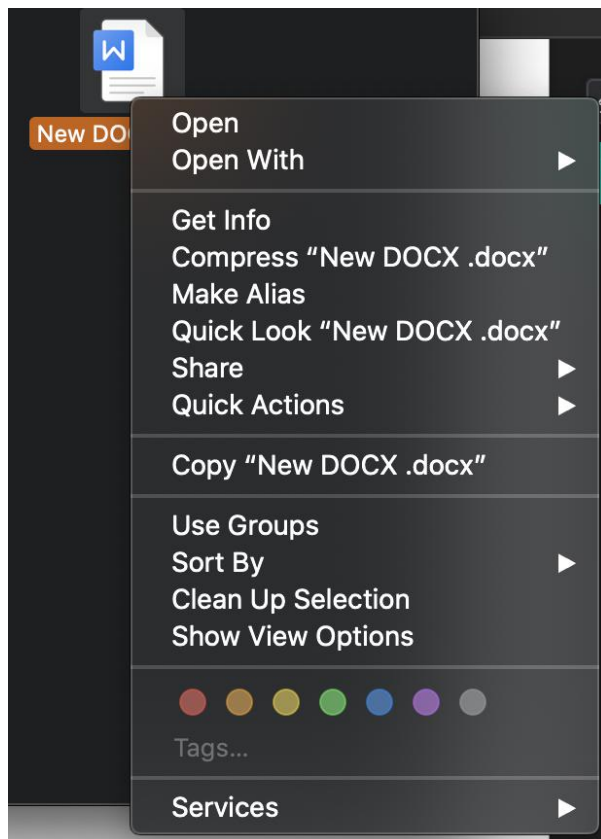
3. Open

Click Open to view all the files in the NTFS drive in a new window.

If the writable is disabled, all the files will be listed in a separate window. The files in this window cannot be modified or removed.



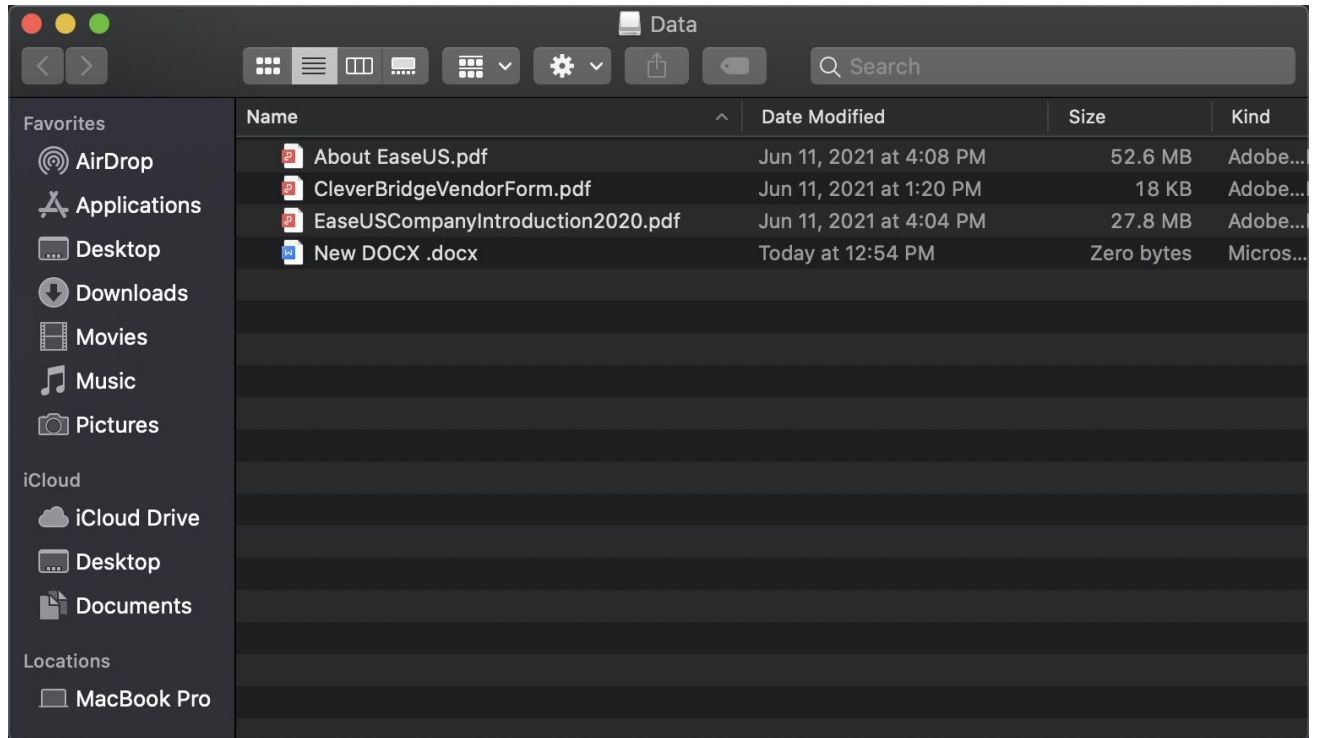
All the available options for the files are listed as below:



Note: If you choose to copy this file in this mode, the new copy will be saved to the desktop on

EaseUS NTFS for Mac User Guide
your Mac.

If the writable is enabled, all the files in the drive will be listed in a new Finder window. You will be able to add, import, edit, or remove files from this drive in this window.



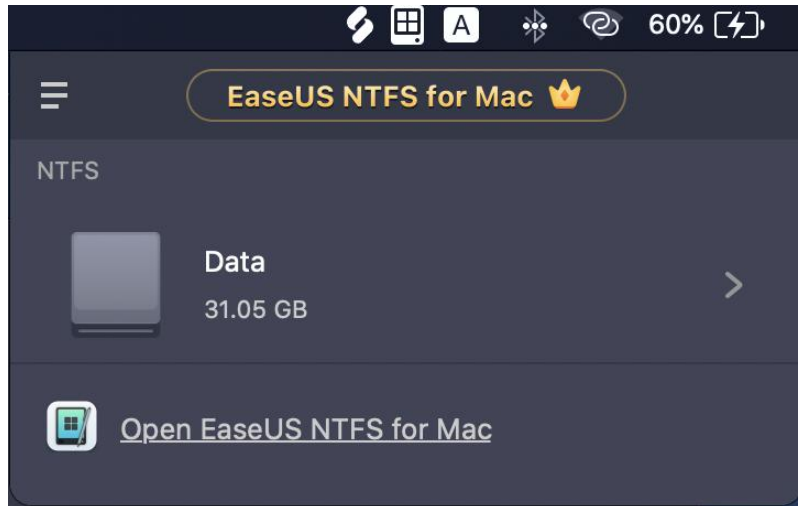
4. Eject

Click Eject to safely remove this NTFS drive from your Mac.

Tray

You can launch the tray at startup to get the quick access to your NTFS drive.





Feedback and Support

If you have any feedback, or suggestions on EaseUS NTFS for Mac, please do not hesitate to let us know. We are also enthusiastic about replying to all your questions about using it. Please feel free to contact us at:

support@easeus.com

We also provide an online chat service and the Live Chat option can be located in the top navigation bar of EaseUS's official website www.easeus.com.